

# HEATING COMPONENTS – Reference Book 2015

August 2015



# Heating Components

## Facts and Main Customers

### Circulation pumps for boilers and heating systems

Installed Pumps

More than **1,5 Mio**



FY2013 heating division total production

# Heating Components

## Facts and Main Customers

Confidential document.  
Any reproduction or transfer to third parties not authorised in writing by Askoll is forbidden by law.

### DIE NEUEN HEIZSYSTEME VON BUDERUS.

**Logamax plus GB192iT**  
Die wandstehende Gas-Brennwert-Kompakt-Heizzentrale überzeugt mit hochwertigem Design und hohem Warmwasserkomfort. Sie lässt sich zudem nachträglich bequem erweitern.

**Logamax plus GBH192iT**  
Die energieeffiziente Hybridlösung kombiniert den Logamax plus GB192iT mit dem neu designten Pufferspeicher PNR. Sie ist nachträglich erweiterbar und eignet sich für die Nutzung regenerativer Energien.

**Logamax plus GB192i**  
Das wandhängende Gas-Brennwertgerät arbeitet besonders effizient. Seine Anschlusskompatibilität sorgt für eine einfache Montage und von vorne zugängliche Komponenten erleichtern die Wartung.

Mehr zu den neuen Heizsystemen von Buderus.




**BUDERUS**  
Logamax plus GB192iT

# Heating Components

## Facts and Main Customers

[ Luft ]  
[ Wasser ]  
[ Erde ]  
[ Boden ]

Gas-Brennwert-Kompaktheizzentrale  
Leistungsbereich:  
2,9 bis 24 kW



Die flexible Lösung für jeden Bedarf

Logamax plus GB172 T

Wärme ist unser Element

**Buderus**



**BUDERUS**  
Logamax plus GB172 T

# Heating Components

## Facts and Main Customers

Confidential document.  
Any reproduction or transfer to third parties not authorised in writing by Askoll is forbidden by law.



**NEFIT (Bosch Group)**  
ProLine NxT

# Heating Components

## Facts and Main Customers

Confidential document.  
Any reproduction or transfer to third parties not authorised in writing by Askoll is forbidden by law.



**Askoll in the boiler more efficient in Denmark**



**Askoll provides 100% of the circulators on top model Remeha Calenta**

**In 2014 Askoll provided aprox. 90% of high efficiency pumps of the Bosch TT group**

# Heating Components

## Facts and Main Customers



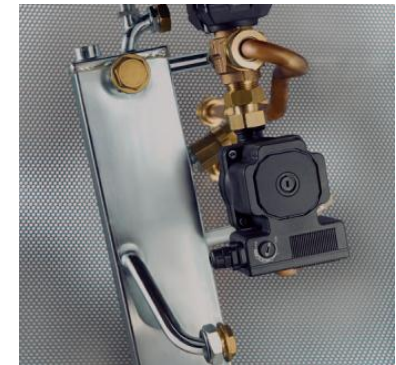
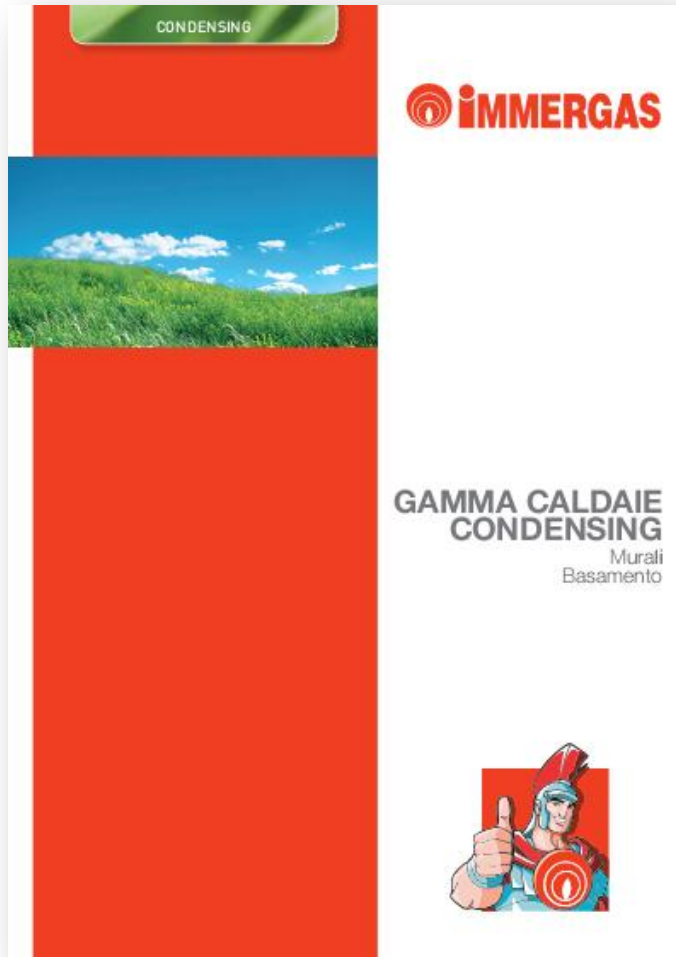
**De Dietrich**   
*Le Confort Durable®*

**De Dietrich (Bosch Group)**  
Modulens G

**Askoll**

# Heating Components

## Facts and Main Customers



**Immergas HERCULES  
Condensing 26/32 kW**

Confidential document.  
Any reproduction or transfer to third parties not authorised in writing by Askoll is forbidden by law.



# Heating Components

## Facts and Main Customers



### ARISTON

Boiler CLAS Premium EVO

Systems MGZ III EVO, MGM II EVO,  
MGM III EVO  
MGz, MGm III EVO

# Heating Components

## Facts and Main Customers

Confidential document.  
Any reproduction or transfer to third parties not authorised in writing by Askoll is forbidden by law.



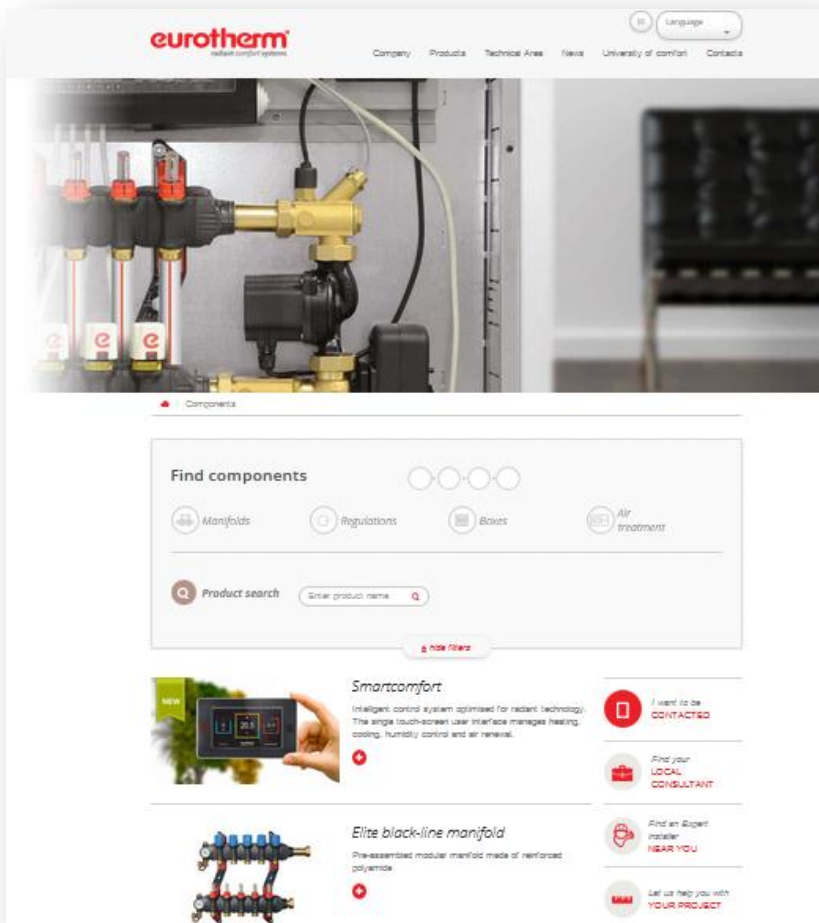
**ELCO**

Condensing Boiler  
ECOFLAM HIGH EFFICIENCY

# Heating Components

## Facts and Main Customers

**eurotherm**<sup>®</sup>  
radiant comfort systems



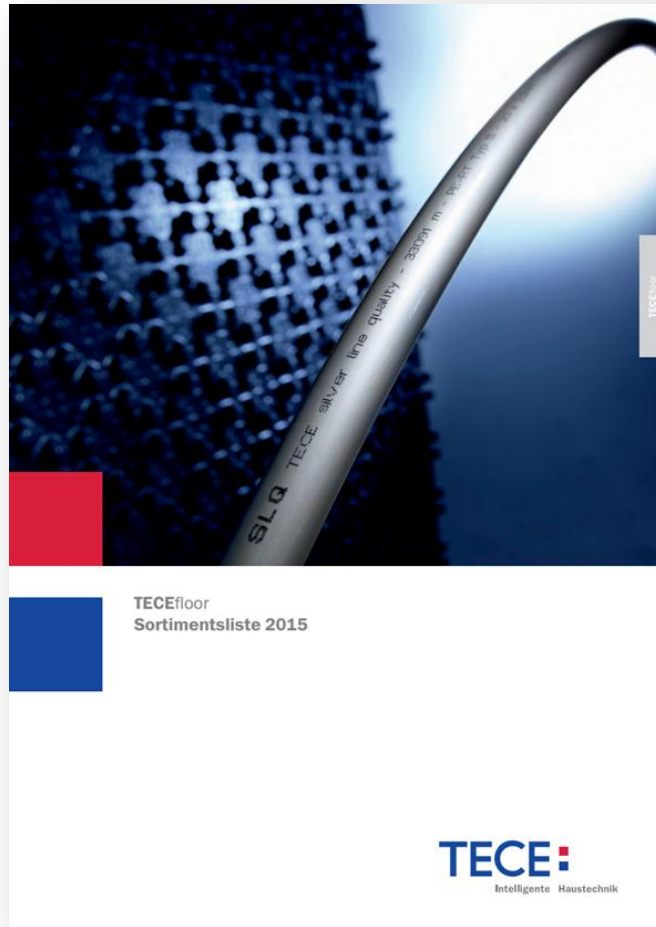
**EUROTHERM**

**Pre-assembled modular manifold  
Series Elite gold-line and Elite black-line**

# Heating Components

## Facts and Main Customers

**TECE:**  
Intelligente Haustechnik

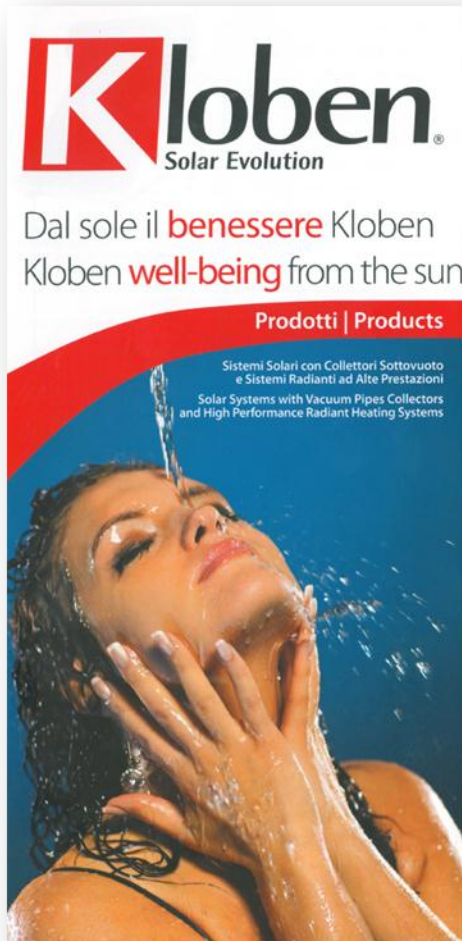


TECE

Modular manifold - Series TECEfloor

# Heating Components

## Facts and Main Customers



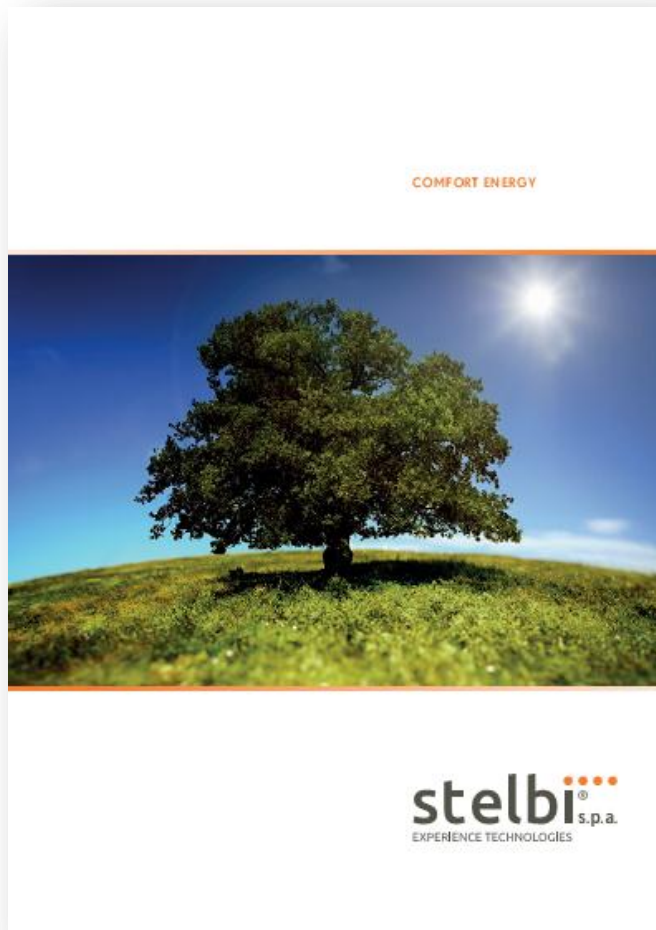
**KLOBEN**

Pre-assembled modular manifold  
Series PREMIX (PERFEKT and V-MAX COMPACT)

# Heating Components

## Facts and Main Customers

Confidential document.  
Any reproduction or transfer to third parties not authorised in writing by Askoll is forbidden by law.



**STELBI S.p.A**  
ECO-LX and LX regulation systems



Cerbos

küttesüsteemid • müük • paigaldus • hooldus  
tel 442 0222 / 434 1000 • www.cerbos.ee • info@cerbos.ee

# Askoll

[www.askoll.com](http://www.askoll.com)  
HEATING COMPONENTS

'Askoll' is a registered trademark.  
Copyright 2013 Askoll Marketing & Communication  
Askoll Holding All Right Reserved

Askoll