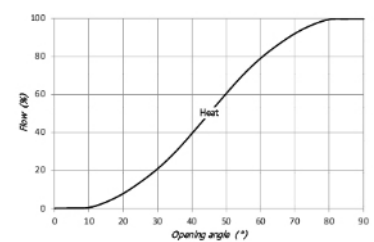


LK 842 ThermoMix P



Valve Characteristics



TECHNICAL DATA

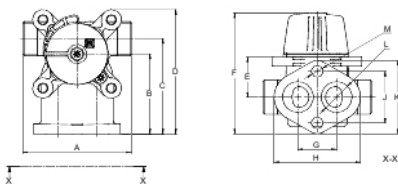
Working temperature	Min. +5°C/Max. +110°C (+120°C briefly)
Ambient temperature	Min. +5°C/Max. +60°C
Max. working pressure	1.0 MPa (10 bar)
Max. pressure difference	50 kPa
Leakage	< 1.5% of Kvs at 50 kPa
Angle of rotation	90°
Torque	< 1 Nm
Media	Water - Glycol/Ethanol mixture max. 50%
Thread standard Male	G
Material, valve body	Brass EN 1982 CB753S
Material, slide/spindle	Brass EN 12165 CW617N
Material, internal cover	PPS Composite
Material, external cover	Aluminium
Material, O-rings	EPDM
Spindle sealing	Two O-rings

LK 842 ThermoMix P is a 4-way mixing valve for mounting on heating boilers.

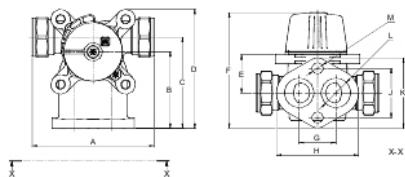
LK 842 ThermoMix P is suitable for motorization.

The valve can be mounted at any angle. LK 842 ThermoMix P can easily be adapted for right- or left-hand mounting.

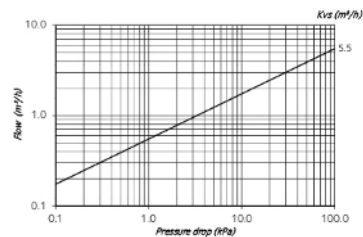
LK 842 - MALE THREAD



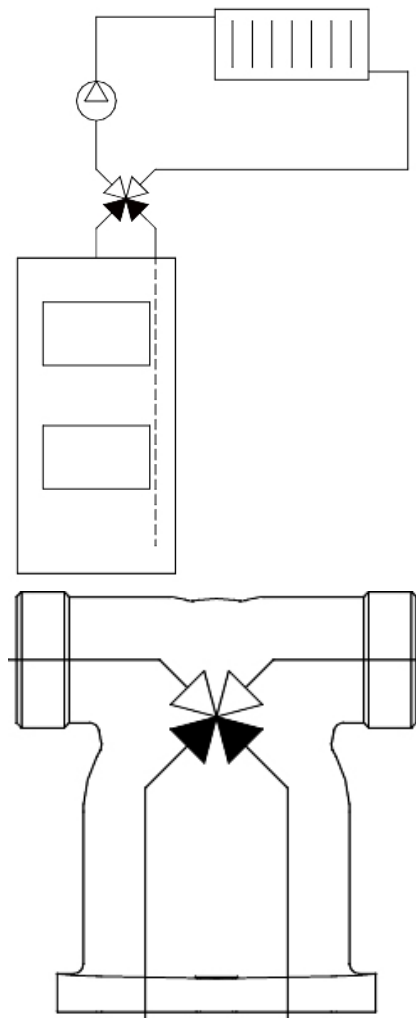
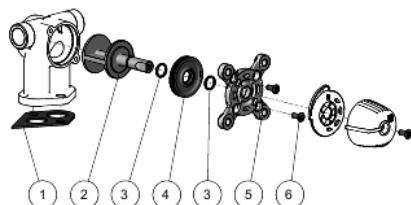
LK 842 - COMPRESSION FITTING



Capacity Diagram



SPARE PARTS AND ACCESSORIES



Article number	Kvs m³/h	Dim.	A mm	B mm	C mm	D mm	E mm	F mm	G mm	H mm	J mm	K mm	L mm	M mm	Weight kg
180879	5.5	M 3/4"	84	62	74	97	31	94	30	67	40	57	Ø24	Ø9	0.8

Article number	Kvs m³/h	Dim.	A mm	B mm	C mm	D mm	E mm	F mm	G mm	H mm	J mm	K mm	L mm	M mm	Weight kg
180880	5.5	15 mm	99	62	74	97	31	94	30	67	40	57	Ø24	Ø9	0.8
180881	5.5	22 mm	99	62	74	97	31	94	30	67	40	57	Ø24	Ø9	0.8

Spare parts and Accessories		
Article number	Article	Included components
013083	Gasket 842	1
187067	Sealing kit 840/841/842, DN 25-32	3, 4 and 6
187071	Repair kit 841/842, DN 25-32	2-6