

# LK 826 ThermoBac

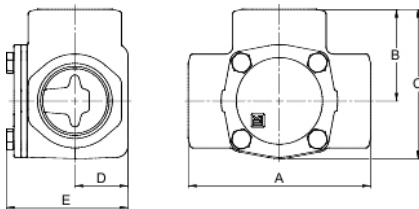
## TECHNICAL DATA

Working temperature	Min. +5°C / Max. +110°C
Ambient temperature	Min. +5°C / Max. +60°C
Max. working pressure	1.0 MPa (10 bar)
Max. pressure difference	50 kPa
Media	Water - Glycol mixture max. 50%
Material, valve body	Cast iron EN 1561 EN-GJL-200
Material, cover	Coated Aluminium
Material, cover sealing	Fibre
Material, sealing	EPDM

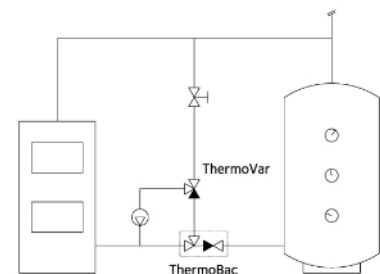
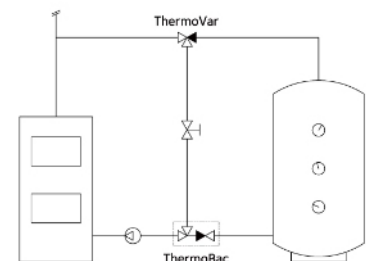
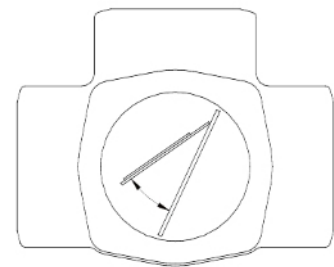
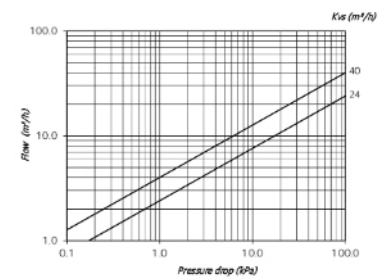
LK 826 ThermoBac is a 3-way check valve with low opening pressure and high fluid capacity. The valve is especially suitable for heating systems with storage tanks. The check valve prevents self-circulation from storage tank to boiler after the fire has gone out. In case of power failure or pump breakdown LK 826 ThermoBac automatically opens for self-circulation.

The valve should be mounted so that the flap in the check valve closes by its own weight.

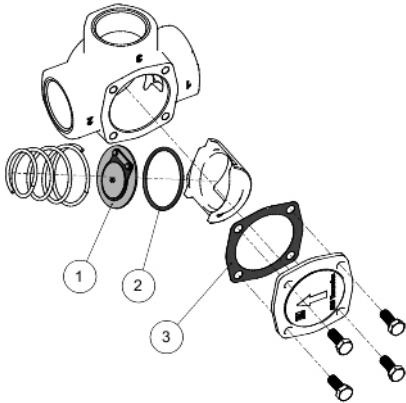
## LK 826 - FEMALE THREAD



## Capacity Diagram



## SPARE PARTS AND ACCESSORIES



Article number	Dim.	Kvs m <sup>3</sup> /h	A mm	B mm	C mm	D mm	E mm	Weight kg
180485	Rp 1½"	24	127	63.5	103	37	85	2.5
180486	Rp 2"	40	127	63.5	106	44	101	4.0

### Spare parts and Accessories

Article number	Article	Included components
187051	Repair kit 826, DN 40-50	1-3